

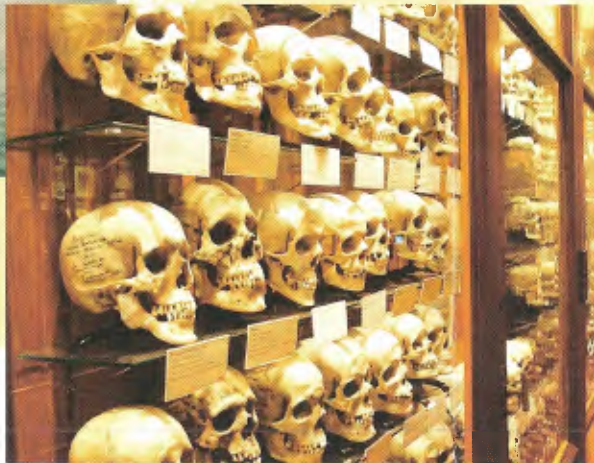
MÜTTER MUSEUM



OUR TREASURES

Our one-of-a-kind treasures include:

- the plaster cast of the torso of world-famous Siamese Twins, Chang & Eng, and their conjoined livers
- Joseph Hyrtl's collection of skulls
- preserved body of the "Soap Lady"
- collection of 2,000 objects extracted from people's throats
- cancerous growth removed from John Wilkes Booth's thorax
- tallest skeleton on display in North America



OUR PURPOSE

The Mütter Museum was founded to educate future doctors about anatomy and human medical anomalies. Today, it serves as a valuable resource for educating and enlightening the public about our medical past and telling important stories about what it means to be human. The Mütter Museum embodies The College of Physicians of Philadelphia's mission to advance the cause of health, and uphold the ideals and heritage of medicine.



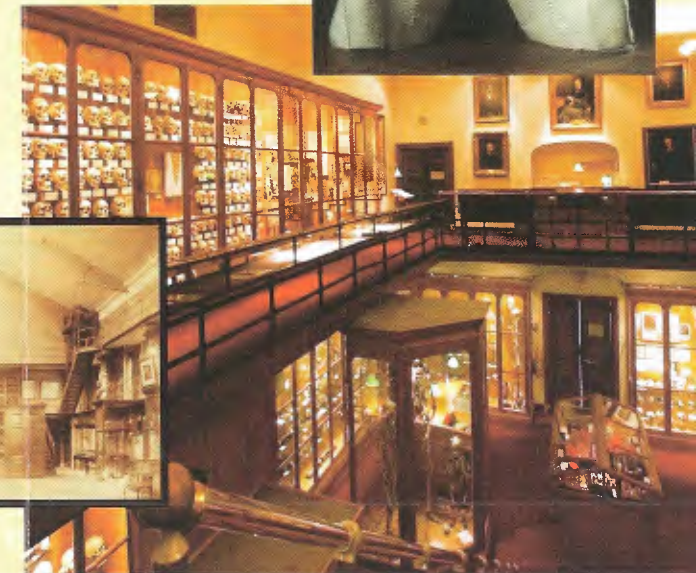
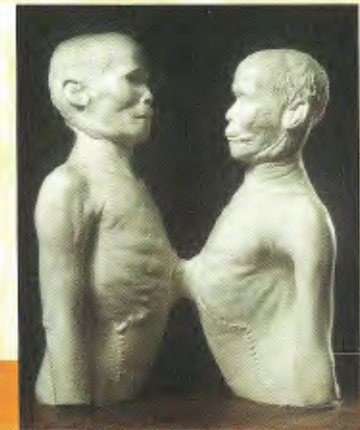
OUR GARDEN

The Benjamin Rush Medicinal Plant Garden contains more than fifty different kinds of herbs, illustrating their medicinal value historically, as well as their value in contemporary medical therapy. Benches in the shade of a magnolia tree offer visitors a pleasant spot to learn, enjoy, or just relax.



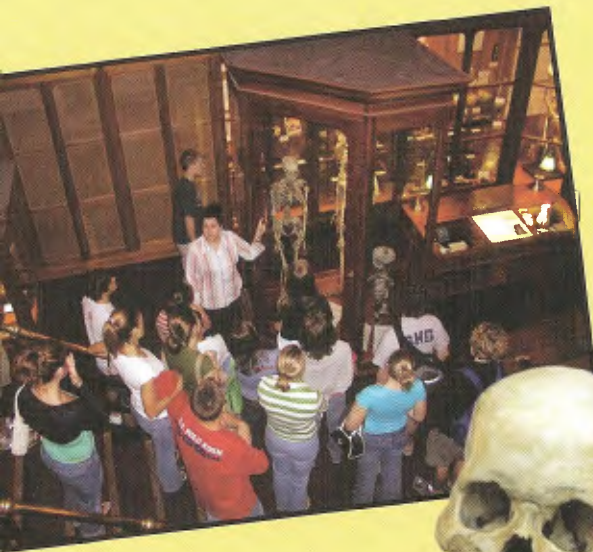
OUR PROGRAMS

The Museum is self-guiding, allowing visitors to view at their own pace. Guided tours are available for groups of ten or more and must be scheduled at least three weeks in advance. The Museum offers curriculum-based health education enrichment programs with hands-on activities for K-12 school groups. The College of Physicians uses all of its treasures in these programs to enhance the museum experience and promote health literacy.



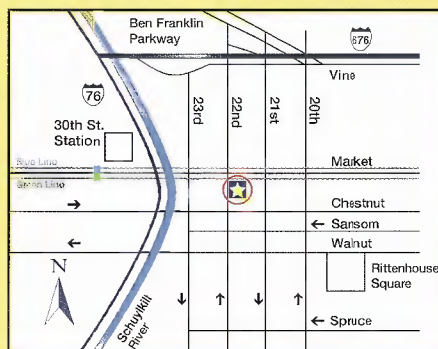
OUR HISTORY

In 1858, Thomas Dent Mütter, retired Professor of Surgery at Jefferson Medical College, presented his personal collection of unique anatomic and pathological materials to The College of Physicians of Philadelphia. Our collection now boasts over 20,000 unforgettable objects. These include fluid-preserved anatomical and pathological specimens; skeletal and dried specimens; medical instruments and apparatus; anatomical and pathological models in plaster, wax, papier-mâché, and plastic; memorabilia of famous scientists and physicians; medical illustrations, photographs, prints, and portraits. In addition, we offer changing exhibits on a variety of medical and historical topics.



Location

The College of Physicians of Philadelphia
19 South 22nd Street
Philadelphia, PA 19103-3097



Hours

Open 10am - 5pm daily, except Thanksgiving, December 25 and January 1.

Public Transportation

Train/Subway: The Museum is a five-minute walk from the subway and Amtrak's 30th Street Station, and a one-half block from the subway-surface stop at 22nd and Market.

Bus: Bus routes #7, 17, 21, 42, 44 and 48 are within two blocks.

Parking

Indoor and outdoor commercial lots are within one or two blocks. Metered parking is on Market, Chestnut, and adjoining streets.



The College is ADA compliant. A wheelchair accessible entrance is located on Van Pelt Street, at the rear of the building.

Filming and photography are not permitted inside the Mütter Museum. Exceptions are granted to scholars, filmmakers, and other professionals on a case-by-case basis. Please contact the Museum directly to obtain permission. Images are available for a fee by contacting the Rights and Reproductions department.

The Museum's collections are available to qualified researchers by appointment only.

Find truly unique gifts for your family and friends at the gift store, or online at www.collphyphil.org.

For more information and admission rates, call us at 215-563-3737 or visit us online at www.collphyphil.org.



The College of Physicians of Philadelphia
M Ü T T E R M U S E U M



The College of Physicians of Philadelphia
M Ü T T E R M U S E U M



Disturbingly Informative.